

MONTHLY MEMBERSHIP PROGRESS REPORT

District 31 S

Results as of: 5/31/2020

GMT:

LOCATION NORTH CAROLINA

GMT CA

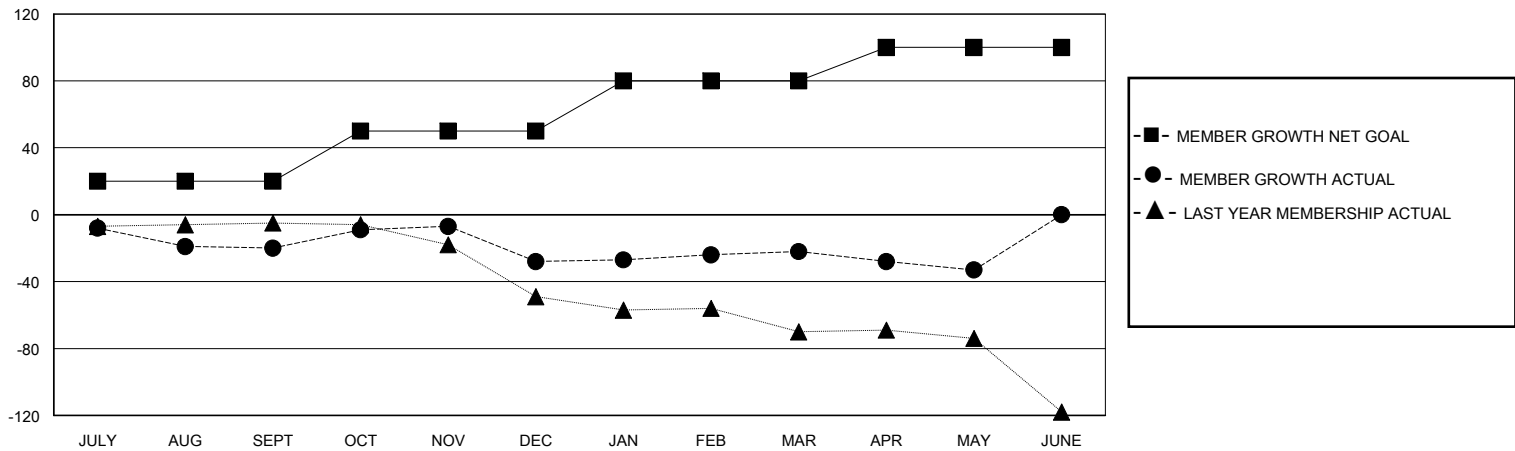
Clubs			
RESULTS FOR 2019-2020			
QUARTER	NEW CLUB GOAL	NEW CLUBS	DROPPED CLUBS
JULY/AUG/SEPT	0	0	2
OCT/NOV/DEC	0	0	1
JAN/FEB/MAR	1	0	0
APR/MAY/JUNE	0	0	0

Members			
RESULTS FOR 2019-2020			
QUARTER	MEMBER GROWTH NET GOAL	MEMBER GROWTH ACTUAL	DROPPED MEMBERS ACTUAL (including transfers)
JULY/AUG/SEPT	20	23	43
OCT/NOV/DEC	30	44	38
JAN/FEB/MAR	30	37	29
APR/MAY/JUNE	20	6	15

GOALS AND ACTUAL NEW CLUBS CUMULATIVE



GOALS AND ACTUAL MEMBERS CUMULATIVE



DROPPED CLUBS: 3

29 CLUBS OF 54 ADDED 1 OR MORE NEW MEMBERS

GENDER DISTRIBUTION

MALE 757 (72.79%)
FEMALE 283 (27.21%)

DROPPED MEMBERS

DECEASED	15
CLUB CANCELLED	32
OTHER	78
TOTAL	125

[CLICK HERE FOR CUMULATIVE MEMBERSHIP DATA](#)

TOTAL FAMILY UNIT MEMBERS	196
FAMILY MEMBERS PAYING HALF DUES	104